



# GMT MONTHLY MEMBERSHIP PROGRESS REPORT

Results as of: 5/31/2020

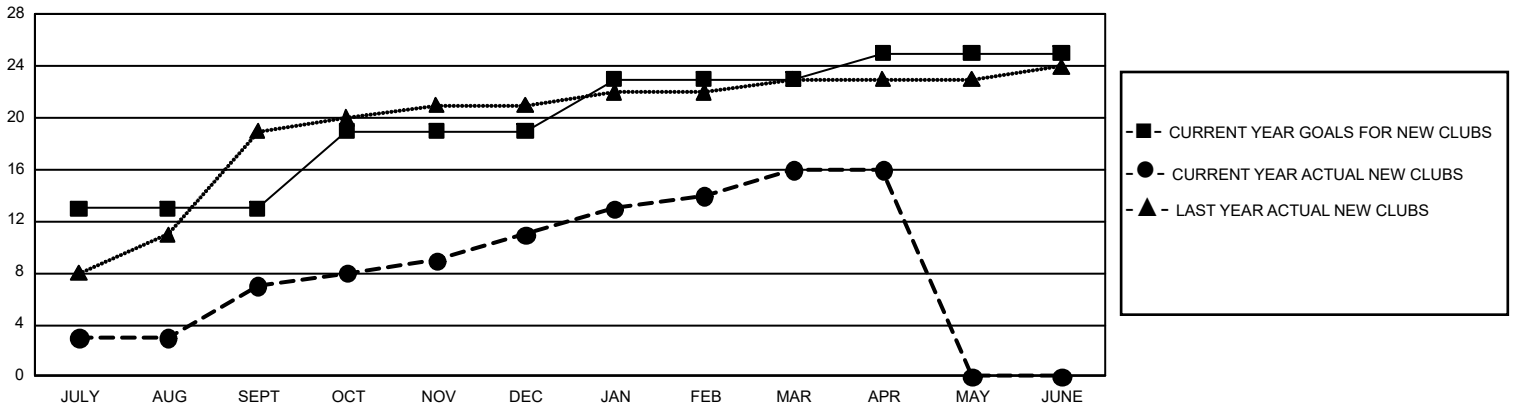
## GMT Constitutional Area 6, Group O

GMT: OPEN

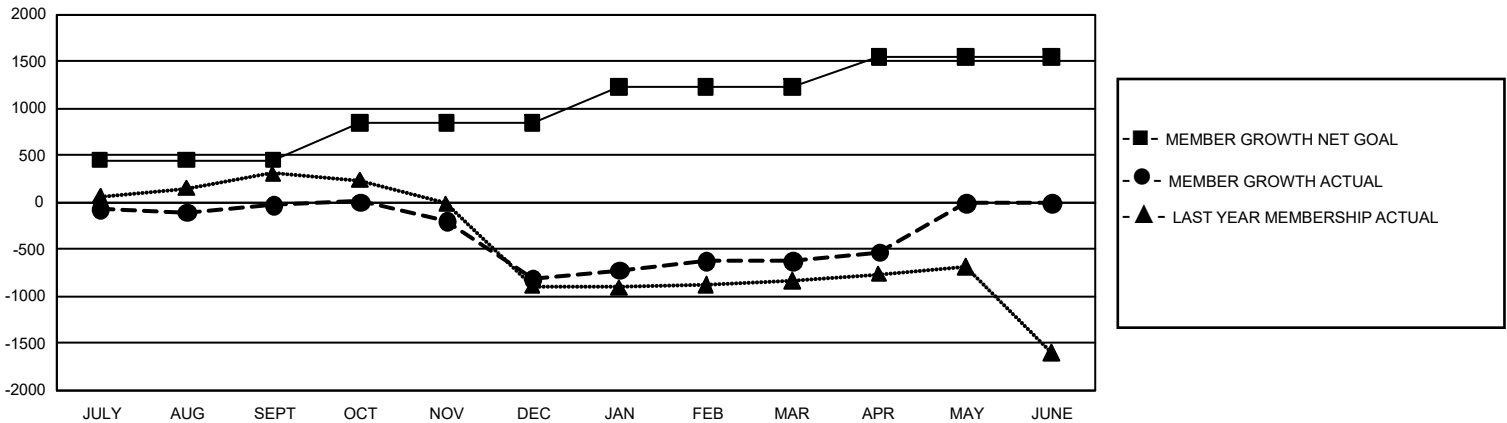
REPORT DOES NOT INCLUDE CLUBS IN UNDISTRICTED AREAS.

Clubs				Members			
RESULTS FOR 2019-2020				RESULTS FOR 2019-2020			
QUARTER	NEW CLUB GOAL	NEW CLUBS	DROPPED CLUBS	QUARTER	MEMBER GROWTH NET GOAL	MEMBER GROWTH ACTUAL	DROPPED MEMBERS ACTUAL (including transfers)
JULY/AUG/SEPT	39	7	0	JULY/AUG/SEPT	1,350	461	404
OCT/NOV/DEC	18	4	17	OCT/NOV/DEC	1,200	396	1,097
JAN/FEB/MAR	12	5	4	JAN/FEB/MAR	1,140	661	337
APR/MAY/JUNE	6	0	0	APR/MAY/JUNE	960	99	10

**GOALS AND ACTUAL NEW CLUBS CUMULATIVE**



**GOALS AND ACTUAL MEMBERS CUMULATIVE**



DROPPED CLUBS: 21	182 CLUBS OF 380 ADDED 1 OR MORE NEW MEMBERS	<b>GENDER DISTRIBUTION</b> MALE            10,482 (65.30%) FEMALE         5,569 (34.70%)
<b>DROPPED MEMBERS</b> DECEASED            14 CLUB CANCELLED      672 OTHER                 1,162 <hr/> TOTAL                 1,848	<a href="#">CLICK HERE FOR CUMULATIVE MEMBERSHIP DATA</a>	TOTAL FAMILY UNIT MEMBERS            9,823 FAMILY MEMBERS PAYING HALF DUES      5,537